



# COVID-19 PROTOCOL DURING EVACUATION



- **Transporting persons from Danger zone to in-country Shelters, and from Shelters to Airplanes/Ships**



Sanitize all transport vehicles before and after each trip, especially the high-touch areas, e.g. door handles, windows, seats  
Use sanitizers with 60-80% ethanol or isopropanol



Separate and move persons by immediate family clusters



All persons (including children) must wear masks; double masking of cloth masks is recommended



Maintain physical distancing of 6 feet between immediate family clusters



Wash hands with running water and liquid soap followed by hand sanitizer before boarding vehicle  
Use hand sanitizers with 60-80% ethanol or isopropanol



If running water and liquid soap are not available, apply a handful amount of hand sanitizer and rub hands for 20 seconds



Sanitize high-touch personal equipment, especially cellphones, frequently



Avoid hugging, touching, mixing of groups at all times



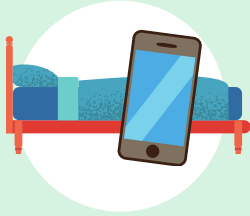
Place Ministry of Health/ police officers on each vehicle to ensure compliance with COVID-19 protocols



# COVID-19 PROTOCOL DURING EVACUATION



## • At in-country Shelters



Sanitize the shelter and amenities (beds, cellphones) and other high-touch areas frequently



Separate and move persons by immediate family clusters



All persons (including children) must wear masks in public spaces



Maintain strict hand hygiene: all persons should wash hands with running water and liquid soap followed by hand sanitizer

Use hand sanitizers with 60-80% ethanol or isopropanol



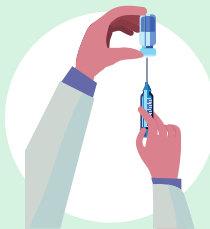
If running water and liquid soap are not available, apply a handful amount of hand sanitizer and rub hands for 20 seconds



Maintain physical distancing of 6 feet between immediate family clusters; avoid hugging and mixing of groups at all times



Perform COVID-19 PCR test (where possible)



Vaccinate (where possible, feasible and acceptable)



Separate symptomatic persons



Provide psychosocial support (where possible)



Place Ministry of Health/police officers on each vehicle to ensure compliance with COVID-19 protocols



# COVID-19 PROTOCOL DURING EVACUATION



- **Cruise Ships (and Ferries, Yachts and Boats) to take persons to other islands**
  - **Pre-screening and boarding**



Screening by Ministry of Health and medical personnel of the cruise line

**NEGATIVE**

Proof of negative PCR test, taken 48-72 hours before boarding (may need to be waived, if not plausible)



Ensure Temperature, Symptom, Health Questionnaire and other COVID-19 specific Entry Screening



Require proof of / perform COVID-19 PCR test (where possible)



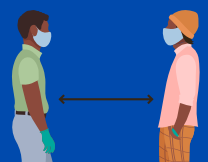
Require proof of vaccinations (where possible)



Separate symptomatic persons

## **In addition, these preventative measures should be followed:**

- Screen and board persons by immediate family clusters
- All persons (including children) must wear masks; double masking of cloth mask if possible
- Maintain strict hand hygiene: wash and/or sanitize hands as often as possible and after touching surfaces
- Place Ministry of Health personnel to ensure compliance with COVID-19 protocols
- Maintain physical distancing guidelines of 6 feet between immediate family clusters during screening and boarding





# COVID-19 PROTOCOL DURING EVACUATION



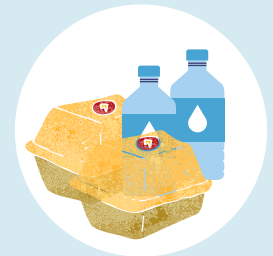
- **Cruise Ships (and Ferries, Yachts and Boats) to take persons to other islands**
  - **Prevention on-board ship (during Stay and Travel)**



Place each immediate family cluster in a single cabin; persons to remain in cabins as much as possible



No recreational events or social gatherings; close all crew bars, gyms, or other group settings



Modify in-room dining and meal service to facilitate social distancing; eliminate self-serve dining options (e.g. buffets)



Any person that develops symptoms en-route should report to the ship's medical officer for evaluation



Separate symptomatic persons



Carrier to practice enhanced hygiene measures, cleaning and sanitation, travel history and medical logs

## In addition, these preventative measures should be followed:

- All persons (including children) must wear masks; double masking of cloth mask if possible
- Maintain strict hand hygiene: wash and/or sanitize hands as often as possible and after touching surfaces
- Clean and sanitize high-touch areas, e.g. bathrooms, frequently
- Sanitize high-touch personal amenities, such as cellphones, frequently
- Maintain physical distancing guidelines of 6 feet between immediate family clusters during meals and other movements within the ship
- Ensure proper hand hygiene and cough etiquette
- Place port health officers on ships to ensure compliance with COVID-19 protocols



# COVID-19 PROTOCOL DURING EVACUATION



- **Cruise Ships (and Ferries, Yachts and Boats) to take persons to other islands**
  - **Disembarkation**



Cruise ship operators must notify the respective national public health authorities and adhere to any testing requirements of receiving countries



Medical staff must screen disembarking persons and crew for symptoms compatible with COVID-19



Ensure persons and crew members with known exposures to COVID-19 are transported separately



All persons (including children) must wear masks; double masking of cloth masks is recommended



Place hand sanitizers at strategic locations throughout ship, e.g. entry and exit points, bathrooms



Maintain physical distancing guidelines of 6 feet between immediate family clusters

**Each individual must be deemed safe to enter country based on countries primary screening procedures**

## **Ships MUST provide the following to the relevant health authority:**

- Maritime Declaration of Health (MDH) to countries (24 hours before)
- Immediate report of illnesses during journey (MIDRS or other)
- Full travel history for each individual
- Temperature screening logs from port of entry and during travel
- Full Medical Logs (for passengers and workers)
- COVID-19 Specific Measures (e.g. temperature screening, testing, physical distancing, masks, hand hygiene, isolation)





# COVID-19 PROTOCOL DURING EVACUATION



## • Arrival at Receiving Country

**QUARANTINE**

All arriving persons should be subjected to Quarantine (14 days) in a controlled environment (shelters, hotels, other settings)



Ensure Temperature, Symptom and other COVID-19 specific Entry Screening



Where possible and feasible, perform PCR test within 24 hours of arrival and then after 7-10 days



Maintain strict hand hygiene: all persons should wash hands with running water and liquid soap followed by hand sanitizer

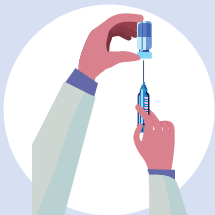
Use hand sanitizers with 60-80% ethanol or isopropanol



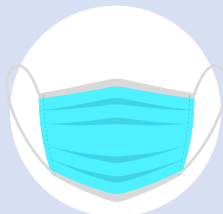
If running water and liquid soap are not available, apply a handful amount of hand sanitizer and rub hands for 20 seconds



Separate and keep persons by immediate family clusters; maintain physical distancing guidelines of 6 feet between family clusters



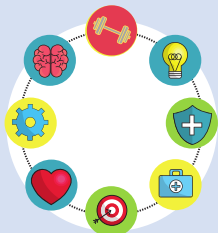
Where possible, feasible and acceptable, vaccinate persons who have not been vaccinated



All persons (including children) must wear masks; double masking of cloth masks is recommended



Separate symptomatic persons



Provide psychosocial support (where possible)



Place Ministry of Health officers to ensure compliance with COVID-19 protocols